

PERKINS MEASURES 2023

Region

Region EFE

Career Educ Assoc of N Ce... ▾

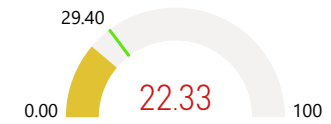
1S1: Four-Year Graduation Rate



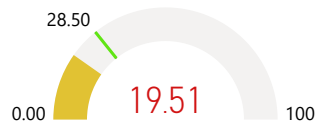
1S2: Extended Graduation Rate



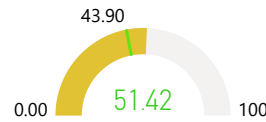
2S1: Academic Proficiency in Reading



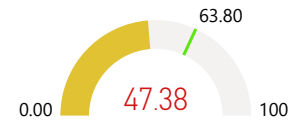
2S2: Academic Proficiency in Mathematics



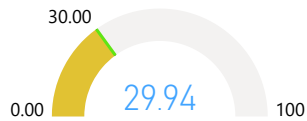
2S3: Academic Proficiency in Science



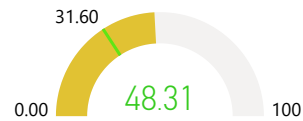
3S1: Post-Program Placement



4S1: Nontraditional Program



5S2: Program Quality Attained Postsecondary Credits



5S3: Program Quality – Work-Based Learning

